



LEHIGH
UNIVERSITY

MAKING THE FUTURE

A PLAN FOR THE LEHIGH CAMPUS

Executive Summary
July 2025



Acknowledgments

We are sincerely thankful to the Lehigh University students, faculty, staff, senior leadership, and Board of Trustees who provided thoughtful and insightful input through collaborative participation in countless meetings, events, surveys, and informal conversations throughout the 18-month planning process.

A Campus of Opportunity

Throughout our history, each new generation of the Lehigh community has found inspiration and purpose in the beauty of our campus.

There is much to discover on the Lehigh campus – from the historic architecture and landscape at Asa Packer, to the vast industrial-scale halls at Mountaintop, to the open spaces and athletic venues at Goodman. Our spaces are both beautiful and functional – designed to support the student experience, interdisciplinary academics, leading research and much more.

Lehigh’s Strategy, *Inspiring the Future Makers*, sets ambitious goals for intellectual engagement and pedagogy, interdisciplinary research to solve immediate and pressing challenges, and the fundamental values of collaboration and connectivity that define our community. Our strategy also recognizes the vital role of the physical campus in enabling this vision by providing spaces for unbounded creativity and experimentation while creating a sense of place and belonging.

A plan to shape the future of Lehigh’s campus is the next logical step in implementing our strategic goals. *Making the Future: A Plan for the Lehigh Campus* is a framework for maximizing the limitless opportunities our campus offers to advance Lehigh’s mission and vision for a shared, sustainable future.

We don’t know what the future holds – but this is an ideal time to seed the future we envision. This plan is designed to *create synergies and preserve flexibility*, allowing us to make the most of emerging opportunities over time, while offering practical recommendations to support our near-term goals. In fact, the plan has already informed key decisions on capital planning priorities for student housing and research space.

The plan is built on the engagement of our campus community, reflecting the input of more than 1,400 participants in workshops and open house events held across campus, and the oft-expressed sentiment that Lehigh should be planned as *one campus with limitless opportunities* – many distinct places with unique qualities that are part of an interconnected whole.

Few if any universities of our size offer the wide diversity of experiences and resources available at Lehigh in one contiguous campus. This plan makes the most of these extraordinary resources, as it reinforces the strength of the **Historic Core** at Asa Packer and the urban experience of the **Southside Gateway**; expands the vision of a hub for innovation at **Mountaintop**; envisions **Forest Park** as a natural resource for the entire community; builds on the role of **Goodman** as the heart of athletics, health and wellness; and improves the connectivity and integration of **Sayre Park**.

I invite you to join us in making the future of the Lehigh campus, with the collaboration, creativity, innovation and spirit of humility and service that define Lehigh’s unique community and our place in the Lehigh Valley and the world.

Joseph J. Helble ’82
President of Lehigh University

Strategy & Process

Making the Future, A Plan for Lehigh's Campus is founded in the vision of excellence outlined in Lehigh's Strategy, *Inspiring The Future Makers*. With ambitious goals and a pragmatic lens for achieving them, the 10-year Strategy envisions new possibilities and bold directions to double research activity, pursue emerging areas of inquiry, and build and strengthen community relationships and external partnerships within Bethlehem and the Lehigh Valley, and beyond – all in support of Lehigh's mission to advance learning through the integration of teaching, research, and service to others.

Lehigh's Strategy outlines three goals that articulate the vision:



Make it New



Make a Difference



Make it Together

The Campus Plan provides a roadmap for achieving the University's strategic goals while maintaining flexibility for the many unknowns of the future.

The planning process and the outcomes of the Campus Plan are based on measurable analysis of existing conditions, capacities, and benchmarking, followed by thorough and rigorous evaluation and comparison of options.

Quantitative and qualitative input and insight from the entire Lehigh community have helped shape the Campus Plan through robust, inclusive, and interactive engagement throughout the entire planning process.

CAMPUS BY THE NUMBERS :

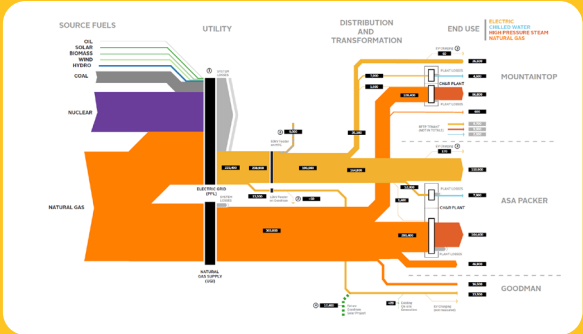
5 million+
*gross square feet
of buildings*

160+
*buildings across
the campus*

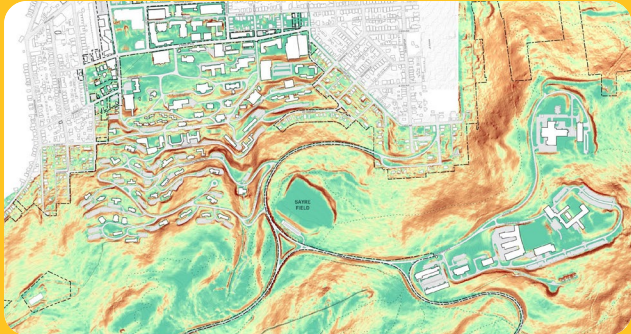
4,000+
*undergraduate
student housing beds*

600+
*feet of elevation
change*

30+
*miles of shuttle
routes*



Campus Analysis



PARTICIPATION BY THE NUMBERS:

15+
*months of campus community
engagement*

5
*open house events on Asa Packer,
Mountaintop, and Goodman*

95+
*individual and small group
stakeholder discussions*

600+
*attendees at campus-wide
in-person events*

689
electronic survey respondents

One Campus. Limitless Opportunities.

Making the Future realizes the full potential of the campus as a place to bring together a community of makers and mentors to drive student success and meaningful change. It recognizes the evolution of the campus from a single area of origin into three separate campuses to today's limitless opportunity of one activated campus shaped by six distinct districts:

- 1

Southside Gateway

An Interdisciplinary Urban Corridor
- 2

Historic Core

Historic Home of Lehigh
- 3

Sayre Park

A Welcoming Residential Neighborhood
- 4

Mountaintop

A Hub for Innovation
- 5

Goodman

The Heart of Athletics, Health & Wellness
- 6

Forest Park

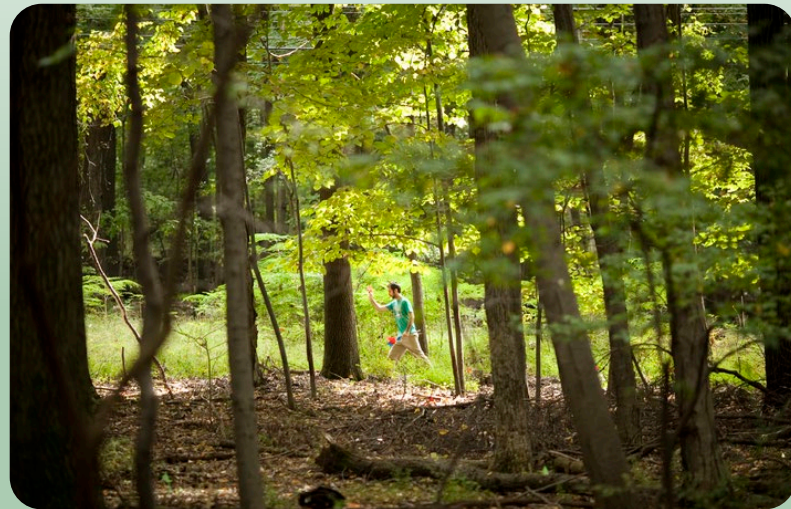
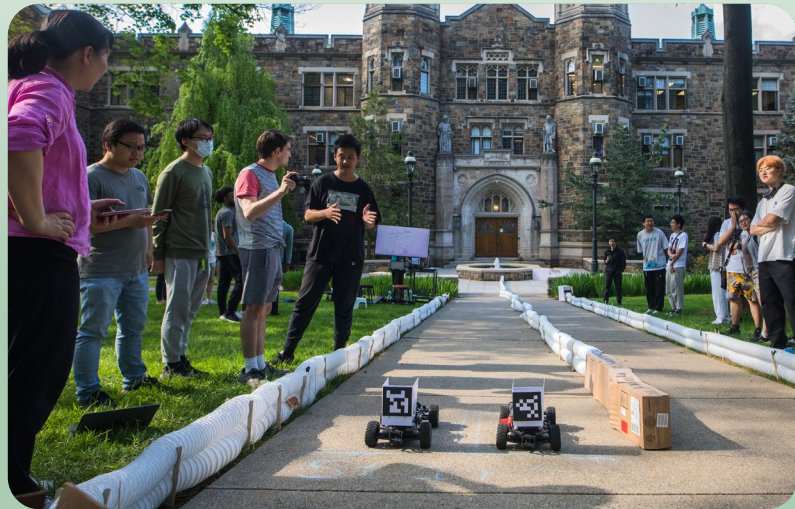
A Natural Resource for the Entire Community



Lehigh's 1,600-acre contiguous campus is a boundless canvas for educational excellence, innovative and interdisciplinary research, and lasting community building.

Journey Through A Campus of Discovery

The Lehigh campus offers a contiguous collection of diverse experiences, from vibrant urban and metropolitan areas to 870+ acres of natural beauty; from historic and classic college campus charm to inspiring industrial spaces for large-scale experimentation – all within a welcoming and supportive campus community. The plan seeks to reinforce the unique qualities of each district while improving connectivity across campus and beyond, fostering unique pathways of discovery across all that Lehigh has to offer.



Guiding Principles

These guiding principles synthesize the input, perspectives, and priorities gathered throughout the planning process and serve as a directional guide to the plan.

SUPPORT

Interdisciplinary research, educational excellence, and strong student outcomes

CREATE

A campus that supports a variety of experiences and a Lehigh for everyone

CONNECT

Distinct campus places and diverse programs into an accessible whole

INNOVATE

Through experimentation across teaching, research, and industry

BUILD

A sustainable future by advancing Lehigh’s environmental goals

FOSTER

A shared Bethlehem experience through community engagement



Campus-Wide Themes

These cross-cutting planning themes apply across the entire campus and capture the essential objectives of the plan.



Welcoming Campus Experience

Lehigh should be a place where everyone feels like they belong.





Interdisciplinary Academics & Research

A campus ecosystem designed to grow innovative research fuels Lehigh’s power.



Connectivity & Access

When every place on campus is within reach, sharing and collaboration can multiply.





Student Life & Belonging

A campus environment grounded in belonging cultivates a welcoming and supportive student life.



Well-being & Recreation

Health and wellness start with a supportive community and opportunities for recreation.





Presence of Nature & Art

Authenticity arises from the powerful perspective that only natural wonders and creative endeavors can provide.



Sustainability & Resilience

Climate action built on principles of viability drives responsibility for today and tomorrow.





Shared Bethlehem

Partnership is the foundation to strengthening and building relationships for shared experiences on and off campus.

Southside Gateway

THE VISION

An interdisciplinary urban corridor where Lehigh engages with the Southside community via academics, research, the arts, and a shared Bethlehem experience.

- Near-Term Priorities
- Long-Term Opportunities



1
HST 3RD AND 4TH FLOOR BUILD-OUT
Strengthening Lehigh's **HEALTH RESEARCH HUB** as an interdisciplinary ecosystem supports Lehigh's Strategy through the completion of HST with state-of-the-art research facilities.



2a
472 VINE STREET REUSE
An early phase "as-is" reuse of the former St. Peter's Church activates the corridor with administrative, academic, or community-oriented uses.

2b
Renovation leverages the unique architecture of **472 VINE STREET** to create a magnet for campus uses.

3
COAS PROGRAM ADJACENCY IMPROVEMENTS
Reconsideration of departmental adjacencies for COAS in Maginnes, Williams, and Drown halls.

- Existing Campus Buildings
- Potential Building Renovation
- Potential Future Buildings
- Potential Future Development Sites

5
Adaptive reuse or redevelopment of **WHITAKER** for academic, research, and administrative uses.

6
Future redevelopment of the **NEVILLE SITE** expands opportunities for academic and research uses and improves public open spaces in the corridor.

7
Future redevelopment with community, arts, and/or admissions uses creates a welcoming **CAMPUS GATEWAY**.

8
Future redevelopment and streetscape improvements make the **BRODHEAD CORRIDOR** a more walkable and welcoming edge of campus.

4a
PACKER AVENUE IMPROVEMENTS
Enhanced pedestrian crossings along the corridor improve walkability, safety, and accessibility.

4b
Future comprehensive redesign of **PACKER AVENUE** fosters a Shared Bethlehem experience with walkable, accessible, and beautiful public spaces.

9
Future improvements to the **ZOELLNER ARTS CENTER & LUAG** facilities and outdoor spaces strengthen the arts at Lehigh.

10
Upgrades to the **DATA CENTER (not sited)** ensure Lehigh's research environment is supported by robust infrastructure.



Historic Core

THE VISION

A vibrant hub where tradition meets innovation; a testament to the university’s commitment to shaping future leaders and creating meaningful impact within both the academic and broader community.

1a

FIRST YEAR ENGINEERING PROGRAM

Reimagined spaces in Packard Lab in alignment with the curricular program goals provide an innovative learning environment.

2

UNIVERSITY DRIVE IMPROVEMENTS

A pedestrian-friendly redesign will transform the roadway into a safe and attractive part of the campus, enabling pedestrianization of additional campus roadways, significantly improving connectivity between the Historic Core and Sayre Park.



3

DROWN HALL IMPROVEMENTS AND WILLIAMS HALL HUMANITIES/SOCIAL SCIENCES HUB

Infrastructure upgrades to Drown Hall provide accessibility and improved spaces and catalyze reconsideration of departmental adjacencies for COAS. Williams Hall programming strengthens interdisciplinary teaching and learning in the humanities.



1b

A comprehensive renovation of **PACKARD LAB** provides expanded and modernized spaces for teaching and learning, including new accessible entrances and a new activated facade along Packer Avenue.

4

A future replacement of **SHERMAN-FAIRCHILD / LEWIS LAB** creates state-of-the-art space for interdisciplinary teaching, learning, and research.

5

CHRISTMAS-SAUCON to be further studied to evaluate options, including renovation to meet contemporary space standards, redevelopment, or replacement with a public open space and art installation commemorating the original building.

6

A future redevelopment of **TREMBLEY**, enabled by capacity in the student housing system, can provide strategic academic or campus-life expansion space, including additional usable green space, within the Historic Core.

7

ENHANCEMENTS TO THE GROVE with public art, seating, and gathering areas, make this treasured space even more vibrant.

- Existing Campus Buildings
- Potential Building Renovation
- Potential Future Buildings
- Potential Pedestrianization
- Potential Future Development Sites

Sayre Park

THE VISION

A welcoming residential neighborhood with diverse housing options and strengthened connections to the Historic Core and Sayre Field for improved access to student life and dining destinations.

- Near-Term Priorities
- Long-Term Opportunities

1

UNDERGRADUATE HOUSING

New student housing in Sayre Park creates a welcoming and vibrant residential community, while enabling renovations and strategic enrollment growth as part of Lehigh's Strategy.

2

WELCOMING AND ACCESSIBLE PATHWAYS

A network of new and/or improved pathways, integrated with seating areas, accessible ramps, lighting, and other features, transform the walkability of Sayre Park and connectivity between Asa Packer and Mountaintop.



3

MULTI-MODAL SAYRE PARK ROAD

A new dedicated walking and bicycling path, enabled by one-way traffic, improves safety through Sayre Park and between Mountaintop and Asa Packer.



6

Future STUDENT HOUSING in Sayre Park complements GREEK LIFE and supports strategic student-life goals.

7

Future expansion of TAYLOR GYM provides additional recreational, wellness, and athletics space for the campus community.

8

Infrastructure upgrades and new pathway access to SAYRE FIELD make this destination more usable year-round, both day and night as a recreational, wellness, and community destination.

Existing Campus Buildings

Potential Building Renovation

Potential Future Buildings

Potential Future Development Sites

Mountaintop

THE VISION

A dynamic mixed-use destination for interdisciplinary research, innovation, and industry partnerships.

- Near-Term Priorities
- Long-Term Opportunities

1

SHARED-USE PATH CONNECTING ASA PACKER & MOUNTAINTOP

An off-street shared-use path connects Sayre Park and Mountaintop, with direct access to Sayre Field, providing more options for access, including safe routes for shareable e-bikes and micro-mobility that make it easier to go uphill.



3

GRADUATE STUDENT RESIDENTIAL VILLAGE

New apartment-style housing for graduate students, visiting faculty, and others provides new options for living on campus and helps activate Mountaintop with day and night functions.

4

HOTEL AND CONFERENCE CENTER

As one of many hubs for innovation on campus, a new hotel and improved conference center leverage Mountaintop's unique assets to enable growth of external partnerships, large-scale conferences, and other activities that further Lehigh's place as a destination for research innovation.

2

ACTIVATION OF THE CIRCLE

As the central open space on Mountaintop, tactical landscape design with improved access, intimate gathering spaces, and public art, complemented by robust arts, culture, and technology events, turn the Circle into a local and regional magnet for Lehigh and Shared Bethlehem programming.



6

ELECTRICAL INFRASTRUCTURE UPGRADES

Electrical infrastructure upgrades will ensure future capacity and resiliency in support of broader campus goals.

5a

IACOCCA NEAR-TERM IMPROVEMENTS

Minor renovations enable locating new research centers in the building, strengthening a hub of built environment and resiliency research on Mountaintop.

5b

A full-scale, phased renovation transforms Iacocca into a contemporary interdisciplinary ecosystem for collaboration and research.

8

The unique architecture of **BUILDING B** is renovated to support making, teaching, research activities, and external partnerships.

9

Improvements to the **BUILDING C** courtyards improve access and makes these spaces more appealing and functional as outdoor gathering and workshop areas.

10

Long-term options for siting **FUTURE RESEARCH, INNOVATION, AND ACADEMIC EXPANSIONS** to support Lehigh's Strategy.

11

An expanded and consolidated **OPERATIONS AND STORAGE HUB** increases operational efficiency, improves art storage, and enables the highest and best use of existing buildings.

7

Redesign of the parking area into a vibrant and welcoming **IACOCCA PLAZA** can provide space for temporary events as well as shuttle access and accessible parking spaces.



Goodman

THE VISION

Heart of athletics, health, and wellness for the Lehigh community and the broader Lehigh Valley.

- Near-Term Priorities
- Long-Term Opportunities

2

MIXED-USE OPPORTUNITIES

A mix of uses, including campus housing and wellness-related uses, activates Goodman and strengthens the presence of Lehigh's identity along Mountain Road.

- Existing Campus Buildings
- Potential Building Renovation
- Potential Future Buildings
- Potential Future Development Sites

1

ATHLETICS IMPROVEMENTS: FIELD HOUSE AND PEAK PERFORMANCE CENTER

Athletics facility improvements, such as a new Indoor Fieldhouse, improve the student athlete experience and raise Lehigh's competitiveness.

3

PUBLIC REALM IMPROVEMENTS

Public realm enhancements to Goodman Drive and a new central Goodman Commons create an exciting and ceremonial entrance and a vibrant and pedestrian-oriented core.



7

Improvements to the SHUTTLE SYSTEM increase frequency and access between Goodman and all other areas of campus.

4

New identity signage at the major GATEWAYS clarifies the arrival moments to Goodman.

5

New EVENT SPACE ENHANCEMENTS, with a central promenade, provide clear access to Goodman Stadium and improve the experience and circulation.

6

A contiguous area reserved for FUTURE FIELD EXPANSION provides flexibility for athletics needs.

7

A WALKING AND BICYCLE PATH TO THE SAUCON RAIL TRAIL creates a direct connection around the mountain to Asa Packer and Southside Bethlehem.

8

Improvements to STABLER ATHLETIC AND CONVOCATION CENTER provide contemporary amenities to enhance the fan/spectator/participant experience.

9

An improved pathway and footbridge over the creek improves connectivity and access to and from SAUCON VILLAGE.

Forest Park

THE VISION

An accessible natural resource benefiting campus and community with shared enjoyment of the outdoors, experiential learning and academic research, and ecological restoration and stewardship.

- Near-Term Priorities
- Long-Term Opportunities

2 Active **CONSERVATION** of the woodlands and **MANAGEMENT** of the forest help restore a natural balance to the habitat and ensure the woodlands can be a place of enjoyment for future generations.



1 ENHANCEMENTS AND ACCESS TO FOREST PARK

Improved pathways, trails, seating areas, educational signage, and other features transform the woodlands into a welcoming place on campus and a robust destination for research that connects Asa Packer, Mountaintop, and Goodman.



A Plan for the Lehigh Campus

Making the Future is a 30-year framework to guide decision-making in support of the Lehigh Strategy: *Inspiring the Future Makers*. The plan seeks to create synergies while preserving optionality for the future. This map summarizes the framework of near- and long-term options in the plan.

